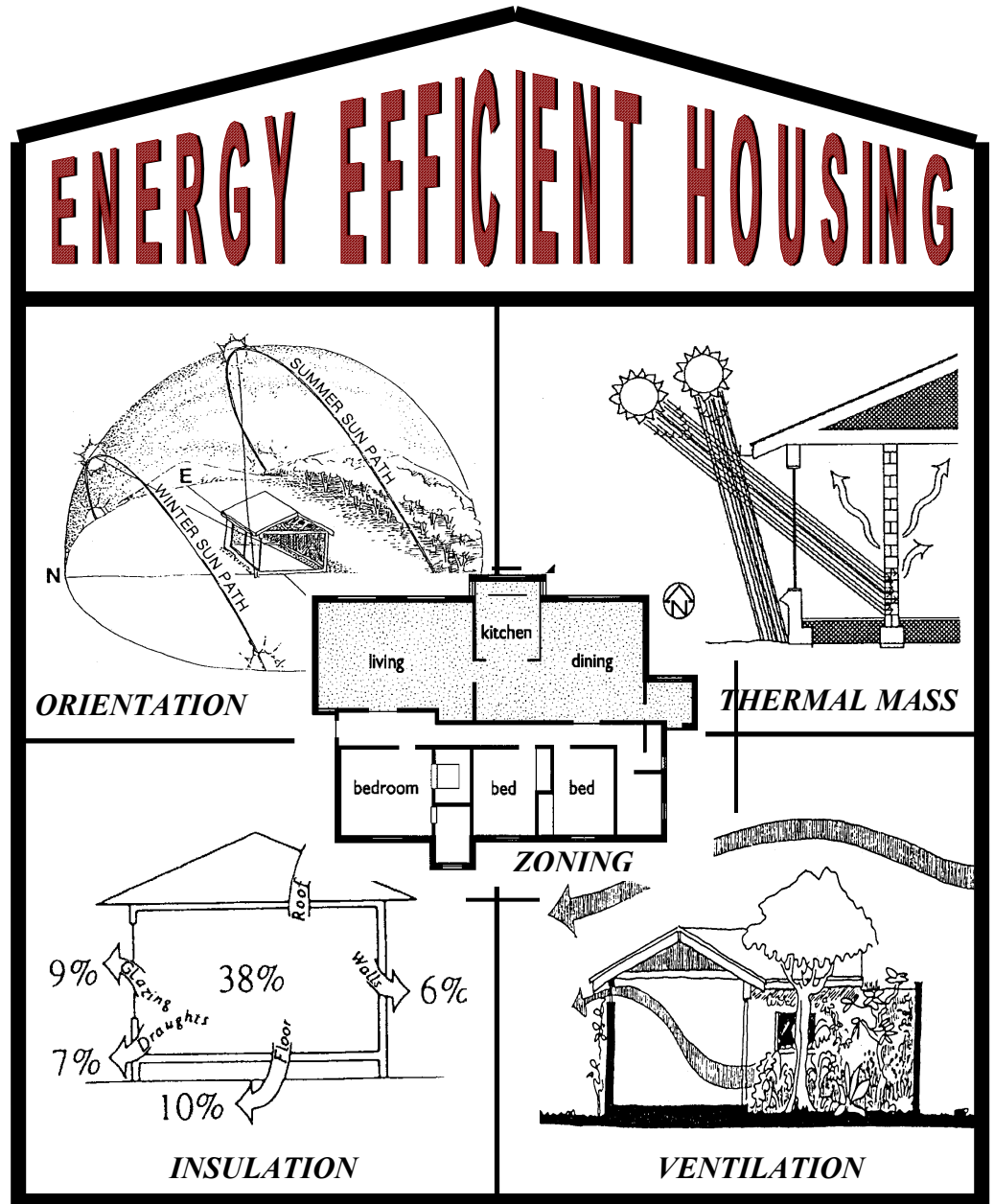




# BUILDING OR RENOVATING YOUR HOME?



- SAVE MONEY
- LIVE COMFORTABLY
- PROTECT THE ENVIRONMENT



For more information contact: **SCC DEVELOPMENT & ENVIRONMENTAL SERVICES GROUP**  
Administration Centre, Bridge Road Nowra • Telephone (02) 4429 3111 • Fax (02) 4429 3178 • Post: PO Box 42 Nowra 2541  
Southern District Office – Deering Street, Ulladulla • Telephone (02) 4429 8999 • Fax (02) 4429 8939 • Post: PO Box 737 Ulladulla 2539

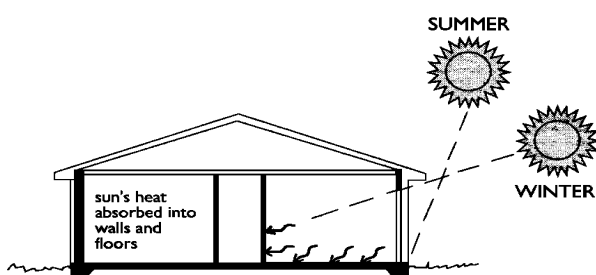
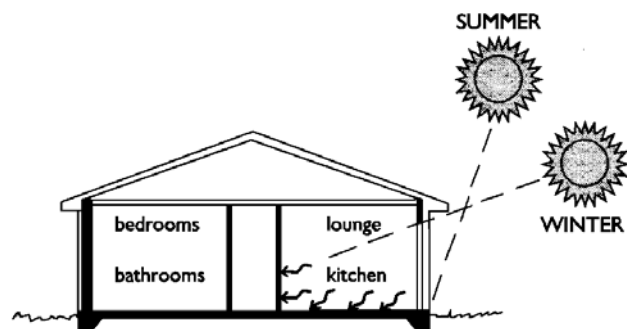
**◉ SIMPLE      ◉ ECONOMICAL      ◉ NO EXTRA COST**

An energy efficient home will be 5 degrees warmer in winter and up to 10 degrees cooler in summer than the average home. Your home will enjoy an abundance of natural light and you can save up to \$400 each year on energy bills. Also, by living in an energy efficient home you will be helping to create a cleaner, healthier environment. An energy efficient home produces 70% or 5 tonnes less greenhouse gas emissions per year than the average family home.

## **5 SIMPLE WAYS TO MAKE YOUR HOME ENERGY EFFICIENT**

### **ORIENTATION**

Make sure your home is positioned in such a way that the living areas face north to allow the winter sun in to warm the house. Important consideration should be given to window sizing, placement and protection. High energy efficiency is achieved when window area is kept within acceptable limits and windows placed so that they are of benefit to your comfort. Windows can be easily shaded in summer by overhanging eaves, blinds and vines. Suitably located deciduous trees can also assist.

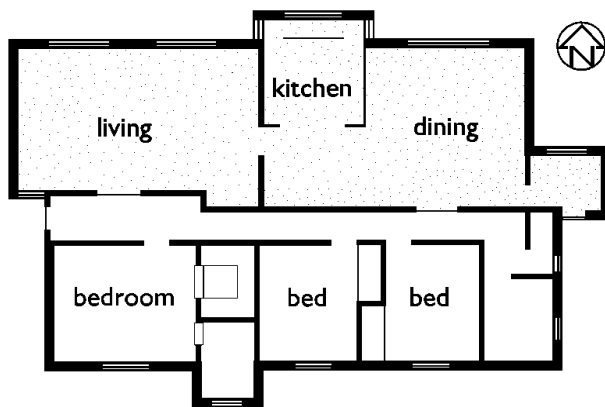
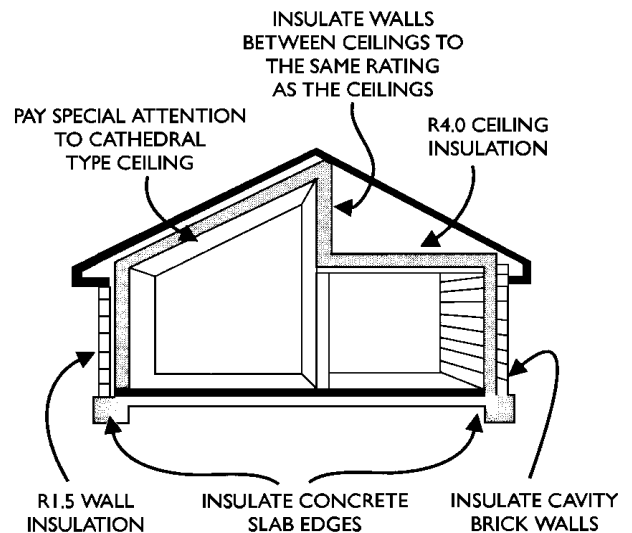


### **THERMAL MASS**

The building materials used for floors and internal walls influence the heat storage capacity and comfort of your home. Heavy building materials such as concrete and brick have thermal mass - the ability to store heat. If the home has good solar access, thermal mass will keep the home warmer in winter. Thermal mass will also keep the home cooler in summer.

## INSULATION

Insulation is the most important item you can add to your home to improve its energy efficiency and reduce energy bills. Insulation should be installed in the floor, walls and ceiling of the house. Insulation materials are measured in 'R' values - the higher the 'R' value, the better the insulation. The recommended 'R' values for Shoalhaven are not less than R 2.5 in the ceiling and R 2.0 in the walls. In areas such as Kangaroo Valley and Milton, a value of not less than 3.0 in the ceiling is suggested.

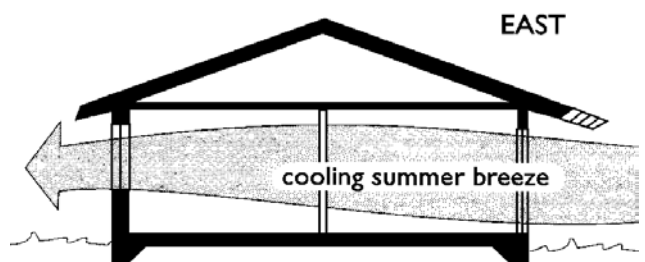


## ZONING

Different rooms are for different purposes and their location will influence energy efficiency and comfort levels. Creating zones by grouping rooms with similar uses and closing off unheated rooms from heated rooms will allow more efficient heating and cooling.

## VENTILATION

Ventilation is necessary to replace internal air and in summer to cool the occupants of the house. Windows and doors should be aligned to encourage cross ventilation for summer cooling. Landscape design also affects air flows and temperatures.



## **NO EXTRA COST**

Good building design includes energy efficient requirements as normal features. The principles of energy efficiency are simple and can be incorporated into any style of home at little cost. Yearly energy costs for an energy efficient home can be up to 60% less than for an 'inefficient' home.

## **FEATURES TO AVOID**

- ☼ Steep blocks sloping to the south
- ☼ Large areas of windows to the west and south
- ☼ Obstructions to north facing windows
- ☼ Large open - plan areas and high ceilings
- ☼ Gaps under doors and around windows

## **ENERGY EFFICIENT PRACTISES IN THE HOME**

Energy efficient practises in the home can save you money and help protect the environment. Here are just a few:

### **☼ SAVING WATER**

There are many simple and thoughtful practises which can save water around the home. Council's brochure 'Saving Water around Your Home' is available free and contains handy hints on saving water and saving money. Dual flush toilets are now compulsory in new homes.

### **☼ APPLIANCES**

Choose appliances which have a high energy efficiency rating. Look for the star rating - the more stars, the more energy efficient. Council has more information on the efficient use of refrigerators, cooktops, ovens, dishwashers, washing machines and clothes dryers.

### **☼ COMPOSTING**

Home composting is a way of recycling household organic waste. Low cost compost bins and worm farms are available from Council. Ask for your free information booklet.

### **☼ RECYCLING**

Glass bottles, aluminium cans, paper, plastic soft drink bottles and milk cartons are some of the items which can be recycled. Information on your nearest drop-off centre is available from your Council in Nowra and Ulladulla.

## **WANT TO KNOW MORE?**

**For more information contact: SCC DEVELOPMENT & ENVIRONMENTAL SERVICES GROUP**  
Administration Centre, Bridge Road Nowra • Telephone (02) 4429 3111 • Fax (02) 4429 3178 • Post: PO Box 42 Nowra 2541  
Southern District Office – Deering Street, Ulladulla • Telephone (02) 4429 8999 • Fax (02) 4429 8939 • Post: PO Box 737 Ulladulla 2539

---